

**IN THE SECOND SESSION OF THE SEVENTH
PARLIAMENT OF THE FOURTH REPUBLIC OF GHANA**

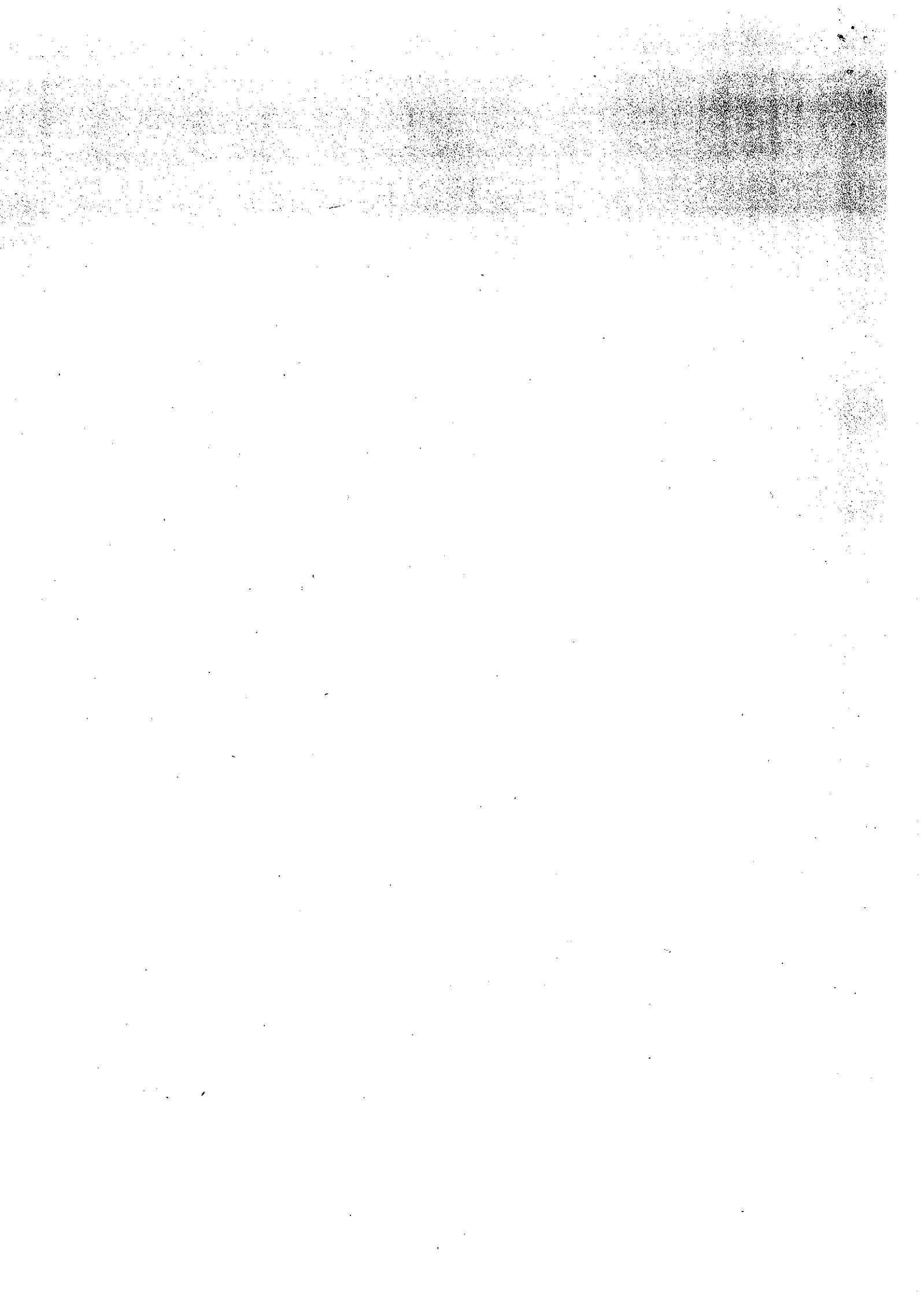
REPORT OF THE

FINANCE COMMITTEE

ON THE

**REQUEST FOR WAIVER OF IMPORT DUTIES, IMPORT VAT,
IMPORT NHIL, ECOWAS LEVY, EDAIF, SPECIAL IMPORT LEVY
AND OTHER APPROVED IMPOSTS INCLUDING INSPECTION
FEES AS ASSESSED AMOUNTING TO THE GHANA CEDIS
EQUIVALENT OF TWO MILLION, TWO HUNDRED AND EIGHTY-
SEVEN THOUSAND, NINETY-FIVE EUROS (€2,287,095.00) ON
PROJECT EQUIPMENT AND MATERIALS FOR THE
IMPLEMENTATION OF THE PROJECT AGREEMENT BETWEEN
THE MINISTRY OF HEALTH AND VAMED IN RESPECT OF THE
DESIGN, CONSTRUCTION, EQUIPPING AND FURNISHING OF
FIVE (5) POLYCLINICS IN THE GREATER ACCRA REGION
(PHASE IV) TO BE LOCATED IN ADENTAN, ASHIAMAN,
BORTIANOR, ODUMAN AND SEGE**

5TH FEBRUARY, 2018



1.0 INTRODUCTION

The Request for waiver of Import Duties, Import VAT, Import NHIL, ECOWAS Levy, EDAIF, Special Import Levy and other approved imposts including Inspection Fees as assessed amounting to the Ghana Cedis equivalent of Two Million, Two Hundred and Eighty-Seven Thousand, Ninety-Five Euros (€2,287,095.00) on project equipment and materials for the implementation of the project agreement between the Ministry of Health and VAMED in respect of the Design, Construction, Equipping and Furnishing of five (5) Polyclinics in the Greater Accra Region (Phase IV) to be located in Adentan, Ashiaman, Bortianor, Oduman and Sege was laid in the House 28th November, 2017 in accordance with Article 174(2) of the Constitution, and referred to the Finance Committee for consideration and report pursuant to the Standing Orders of the House.

The Committee met with a Deputy Minister for Finance Hon. Abena Osei Asare, a Deputy Minister for Health, Hon. Kingsley Aboagye-Gyedu and a technical team from the Ministries of Finance and Health and officials of the Customs Division of Ghana Revenue Authority to consider the Request.

2.0 BACKGROUND

As part of efforts to achieve the goals of the health sector as defined in the Ghana Shared Growth and Development Agenda (GSGDA), Government is undertaking a number of interventions to improve the health sector. These interventions include the provision of facilities to meet client expectations and promote effective clinical service delivery in the country.

It is in line with this commitment that Government of Ghana sourced funding from Unicredit Bank Austria A.G for an amount of Thirteen Million, Five Hundred Thousand Euros (€13,500,000) for the financing the Construction and Equipping of Five (5) polyclinics at Adentan, Bortianor, Oduman and Sege, all in the Greater Accra Region.

Parliament approved the Agreement between the Government of Ghana and Unicredit Bank Austria A.G at its Twenty-Fourth (24th) sitting of the Second Meeting of the Fourth Session of the Sixth Parliament held on Tuesday, 28th June, 2016.

In order to implement the project, Government has contracted VAMED Nederland SV to construct and equip the five (5) polyclinics.

Conditions precedent to the disbursement of the credit facility and Clause 5.6 of the Project Agreement commit the Government of Ghana to exempt the Contractor from the payment of taxes, custom duties, fees and other charges due in Ghana in connection with the works required for the implementation of the project.

The implication of the provision is that Government of Ghana shall be solely and fully responsible of the component of the Project financing cost covering taxes and other fiscal levies which may be imposed in the Republic of Ghana with respect to the supply of materials, services and equipment for the execution of the Contract.

To ensure that the project is effectively implemented and in compliance with Article 174 of the 1992 Constitution, this request for tax and duty waiver for the construction and equipping of the 5 polyclinics has been submitted to Parliament for approval.

3.0 THE REQUEST

The request is for a waiver of import duties, import VAT/ NHIL, EXIM Levy, ECOWAS Levy and Special Import Levy amounting to Two Million, Two Hundred and Eighty Seven Thousand and Ninety Five Euros (€2,287,095.00).

3.1 Assessment of duties, taxes and levies

The assessment is made up of the following taxes:

Table 1 Assessment of taxes and duties

	Tax/ Duty/ Levy	Estimated Amount (€)
1	Import Duty	772,023
2	Import VAT	1,018,327
3	Import NHIL	169,721
4	EDAIF (EXIM)	32,488
5	ECOWAS LEVY	32,488
6	INSP	64,976
	Total	2,287,095

Please see the details of the tax assessment in Appendix I.

4.0 OBSERVATIONS

4.1 Progress of work

The Deputy Minister for Health informed the Committee that construction under the project commenced in November. The five polyclinics are at various levels of completion as follows:

Table 2 Progress of work

No	Name	Percentage (%) completed
1	Sege	35
2	Ashiaman	27
3	Adentan (Obojo)	25
4	Oduman	27
5	Botianor	26

The Committee was informed that there was a month's delay in the commencement of the project due to issues relating to tax waiver and clearing at the port. However, the Contractor is working hard to catch up with the original timelines.

4.2 Benefits of the Project

The technical team informed the Committee that the project is expected to provide quality healthcare for the people in Adentan, Sege, Bortianor, Oduman and Ashiaman and their environs. It would also enhance productivity of the inhabitants in the areas.

The Project has the potential of creating about five hundred (500) direct jobs (both skilled and unskilled).

4.3 Siting the Adentan Polyclinic in Obojo

The Deputy Minister indicated that it was the intention of the Ministry of Health to site one of the polyclinics in the main Adentan Township. However, due to difficulties in getting a site, the polyclinic is being constructed in Obojo instead, in the Adentan Municipality.

4.4 Temporal Permits for clearing goods

The Deputy Minister for Finance informed the Committee that in order to ensure that projects are not overly delayed as a result of delays in obtaining tax waivers from Parliament, the Ministry of Finance sometimes issues temporal permits to contractors to enable them clear some key items for on-going projects.

So far, temporal permits amounting to Gh¢2,137,326.04 have been issued to enable the contractor clear some equipment. This temporal exemption has been included as part of the request currently before parliament for approval.

4.5 Tax Exemption Policy

The Deputy Minister stated that the Ministry was in the process of developing guidelines and would soon come up with a tax exemption policy to help streamline the tax exemptions granted.

5.0 RECOMMENDATION

5.1 Tax Exemption Policy

The Committee noted that the Ministry for Finance was developing a tax exemption policy. The Committee is of the view that the policy would help streamline the tax exemptions regime.

The Committee recommends that the Finance Ministry expedite work on the policy to help sanitize the system.

5.2 Banning the Issuing of Temporary Permits

The Committee expressed concern about the manner that the Ministry of Finance grants temporal permits to contractors to clear items instead of ensuring the timely submission of tax waiver requests for parliamentary approval.

The Committee noted that the delays in getting parliamentary approval were rather from the Sector ministries as they seem to prefer the temporary permits instead of timeously coming to Parliament for approval.

The issuance of temporal permits defeats Parliament's oversight responsibility.

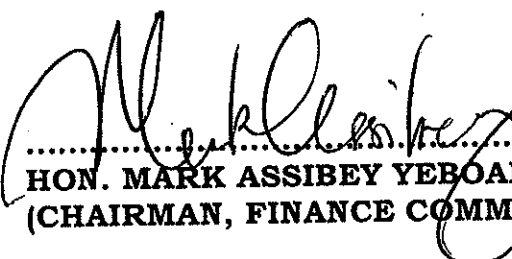
The Committee therefore recommends that the Ministry of Finance should stop granting temporary permits. The Ministry for Finance should rather impress upon the sector ministries to present their list of items for exemption early to enable the Finance Ministry present these requests for tax waivers along with the appropriate loan agreements to Parliament when seeking approval. This would reduce delays relating to approval for tax waivers and also expedite the completion of these projects.

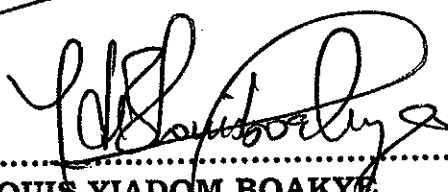
6.0 CONCLUSION

Considering the benefits the health sector stands to gain from undertaking this project and the immense socio-economic benefits to be derived from the project the Committee is of the view that the request is in the right direction.

The Committee therefore recommends to the House the adoption of its report and approve the Request for waiver of Import Duties, Import VAT, Import NHIL, ECOWAS Levy, EDAIF, Special Import Levy and other approved imposts including Inspection Fees as assessed amounting to the Ghana Cedis equivalent of Two Million, Two Hundred and Eighty-Seven Thousand, Ninety-Five Euros (€2,287,095.00) on project equipment and materials for the implementation of the project agreement between the Ministry of Health and VAMED in respect of the design, construction, equipping and furnishing of five (5) Polyclinics in the Greater Accra Region (Phase IV) to be located in Adentan, Ashiaman, Bortianor, Oduman and Sege in accordance with Article 174(2) of the Constitution.

Respectfully submitted.


.....
HON. MARK ASSIBEY YEBOAH (DR)
(CHAIRMAN, FINANCE COMMITTEE)


.....
LOUIS YIADOM BOAKYE
(FOR CLERK TO THE COMMITTEE)

TAX ASSESSMENT

IMPORTER: VAMED ENGINEERING GMBH & CO KG/ POLYCLINICS - GREATER ACCRA REGION

Description of Goods	Qty	Unit	CI (EURO)	I/D Rate	Imp Duty	Imp VAT	Imp NHIL	Eco Levy	EDAI	Insp Fee	W/Tax	Proc Fee	S.I.L.	TOTAL (EURO)
Emergency generator 83 KVA set	5	pcs	392,863.90	5%	19843	61876	10313	1964	1964	3929	3929	0	7857	111,475.13
NYCWV 4X35/ 16mm2 Cable	365	m	8,716.88	10%	872	1438	240	44	44	87	87	0	174	2,985.53
NYCWV 4X25/ 16mm2 Cable	365	m	6,453.09	10%	645	1065	177	32	32	65	65	0	129	2,210.18
NYV-U 5X6 Cable	735	m	7,379.31	10%	738	1218	203	37	37	74	74	0	148	2,527.42
NYV-U 5X2.5 Cable	735	m	4,104.47	10%	410	677	113	21	21	41	41	0	82	1,405.78
NYV-U 7x2.5 Cable	735	m	2,488.88	10%	249	411	68	12	12	25	25	0	50	852.44
NYV-U 3X10 Cable	735	m	3,659.09	10%	366	604	101	18	18	37	37	0	73	1,253.24
A05VV-U (YM) 3x1.5 Cable	4395	m	3,080.94	10%	308	508	85	15	15	31	31	0	62	1,055.22
A05VV-U (YM) 3x2.5 Cable	4395	m	5,117.49	10%	512	844	141	26	26	51	51	0	102	1,752.74
A05VV-U (YM) 3x4 Cable	2200	m	4,548.25	10%	455	750	125	23	23	45	45	0	91	1,557.77
A05VV-U (YM) 4x1.5 Cable	5860	m	5,639.68	10%	584	931	155	28	28	56	56	0	113	1,931.69
A05VV-U (YM) 5x1.5 Cable	3665	m	4,267.49	10%	427	704	117	21	21	43	43	0	85	1,461.61
A05VV-U (YM) 5x2.5 Cable	1465	m	2,610.96	10%	261	431	72	13	13	26	26	0	52	894.26
A05VV-U (YM) 5x4 Cable	735	m	2,183.23	10%	218	360	60	11	11	22	22	0	44	747.76
A05VV-U (YM) 5x6 Cable	1100	m	4,861.92	10%	486	802	134	24	24	49	49	0	97	1,665.21
A05VV-U (YM) 5x16 Cable	880	m	10,298.90	10%	1030	1699	283	51	51	103	103	0	206	3,527.37
A05VV-U (YM) 7x1.5 Cable	185	m	320.92	10%	32	53	9	2	2	3	3	0	6	109.92
pipe dm 25, flexible	4395	m	992.17	20%	198	179	30	5	5	10	10	0	20	456.40
pipe dm 40, flexible	5130	m	2,986.66	20%	597	538	90	15	15	30	30	0	60	1,373.86
connector for pipe ML 25	735	pcs	148.46	20%	30	27	4	1	1	1	1	0	3	68.29
connector for pipe ML 40	735	pcs	331.85	20%	66	60	10	2	2	3	3	0	7	152.65
pipe dm 25, straight	2930	m	1,044.39	20%	209	188	31	5	5	10	10	0	21	480.42
pipe dm 40, straight	365	m	294.90	20%	59	53	9	1	1	3	3	0	6	135.65
pipe dm 50, straight	110	m	148.38	20%	29	26	4	1	1	1	1	0	3	67.33

Vamed Engineering GmbH Co KG

MANA REVENUE AUTHORITY
(CUSTOMS DIVISION)
P. O. BOX 8, ACCRA

Description of Goods	Qty	Unit	Clf (EURO)	I/D Rate	Imp Duty	Imp VAT	Imp NHIL	Eco Levy	EDALF	Insp Fee	W/Tax	Proc Fee	S.I.L.	TOTAL (EURO)
connector for pipe TML50	30	pcs	18.18	20%	4	3	1	0	0	0	0	0	0	8.36
clip to fixing pipe TKLS25	735	pcs	96.08	10%	10	16	3	0	0	1	1	0	2	32.90
clip to fixing pipe TKL40	365	pcs	82.40	10%	8	14	2	0	0	1	1	0	2	28.22
clip to fixing pipe TKL50	170	pcs	84.64	10%	5	9	1	0	0	1	1	0	1	18.68
flash mounting box 100/100/50	190	pcs	1,072.31	10%	107	177	29	5	5	11	11	0	21	367.27
flash mounting box 150/150/65	35	pcs	296.09	10%	30	49	8	1	1	3	3	0	6	101.41
flash mounting box 250/250/65	95	pcs	983.14	10%	98	162	27	5	5	10	10	0	20	336.72
surface mounting box 100/100/60	75	pcs	204.96	10%	20	34	6	1	1	2	2	0	4	70.20
surface mounting box 150/150/80	35	pcs	231.63	10%	23	38	6	1	1	2	2	0	5	79.33
cover plates for cable KAD250AST	735	pcs	1,039.22	10%	104	171	29	5	5	10	10	0	21	355.93
warning tape for cable	1465	m	87.03	10%	9	14	2	0	0	1	1	0	2	29.81
underground pipe flexible KSX125	735	pcs	2,890.60	10%	289	477	79	14	14	29	29	0	58	990.03
connector VM125	145	pcs	678.79	10%	68	112	19	3	3	7	7	0	14	232.49
end cap DX-VS125	75	pcs	302.98	10%	30	50	8	2	2	3	3	0	6	103.77
underground pipe flexible KSX65	1465	m	1,586.58	20%	313	292	47	8	8	16	16	0	31	720.63
connector VM65	365	pcs	797.96	20%	160	144	24	4	4	8	8	0	16	367.06
end cap DX-VS65	75	pcs	70.40	20%	14	13	2	0	0	1	1	0	1	32.38
cable tray H60 W200	45	m	144.90	20%	29	26	4	1	1	1	1	0	3	66.65
protection tape	35	m	71.11	20%	14	13	2	0	0	1	1	0	1	32.71
angle connector 100	20	pcs	77.47	20%	15	14	2	0	0	1	1	0	2	36.64
divider strip H60	45	m	55.61	20%	11	10	2	0	0	1	1	0	1	25.58
mounting plate for box	75	pcs	89.11	20%	18	16	3	0	0	1	1	0	2	40.99
mounting rail A4, lenght 2000mm	365	pcs	5,251.81	20%	1050	945	158	26	26	53	53	0	105	2,415.83
screw for fixing trays	365	pcs	47.70	20%	10	9	1	0	0	0	0	0	1	21.94
cable ladder H60 W500	30	m	455.18	20%	91	82	14	2	2	5	5	0	9	209.38
connector	75	pc	106.93	20%	21	19	3	1	1	1	1	0	2	49.19
PVC duct 80/60 grey	365	m	1,435.47	20%	287	256	43	7	7	14	14	0	29	660.31

Description of Goods	Qty	Unit	CF (EURO)	I/D Rate	Imp Duty	Imp VAT	Imp NHIL	Eco Levy	EDAF	Insp Fee	W/Tax	Proc Fee	S.I.L.	TOTAL (EURO)
PVC duct 130/60 white	175	m	3,191.67	20%	638	575	96	16	16	32	32	0	64	1,468.17
box for duct	190	pcs	519.22	20%	104	93	16	3	3	5	5	0	10	238.84
mounting materials	735	pcs	43.66	20%	9	8	1	0	0	0	0	0	1	20.09
Main-distribution boards	15	pcs	74,476.98	10%	7448	12289	2048	372	372	745	745	0	1490	25,506.37
e-meter board	20	pcs	9,029.95	10%	903	1490	248	45	45	90	90	0	181	3,092.76
change over e-meter staff house	15	pcs	3,872.78	10%	387	639	107	19	19	39	39	0	77	1,326.43
small sub-distribution boards	15	pcs	9,732.75	10%	973	1606	268	49	49	97	97	0	195	3,333.47
photoelectric lighting controller	5	pcs	1,354.14	10%	135	223	37	7	7	14	14	0	27	463.79
AC switch	80	pcs	962.88	10%	96	159	26	5	5	10	10	0	19	329.79
1 gang 1 way switch	455	pcs	5,476.37	10%	548	904	151	27	27	55	55	0	110	1,875.66
2 gang 1 way switch	15	pcs	180.54	10%	18	30	5	1	1	2	2	0	4	61.83
1 gang 2 way switch	105	pcs	1,263.78	10%	126	209	35	6	6	13	13	0	25	432.84
push button	185	pcs	2,470.64	10%	247	408	68	12	12	25	25	0	49	846.20
bell push button	15	pcs	297.63	10%	30	49	8	1	1	3	3	0	6	101.94
bell	15	pcs	705.23	10%	71	116	19	4	4	7	7	0	14	241.54
socket 3x3 BS	785	pcs	7,377.65	10%	738	1217	203	37	37	74	74	0	148	2,526.85
socket 3x6 BS	350	pcs	4,279.13	10%	428	706	118	21	21	43	43	0	86	1,485.60
socket telephone	30	pcs	293.35	10%	29	48	8	1	1	3	3	0	6	100.47
outlet 400/230	15	pcs	341.30	10%	34	56	9	2	2	3	3	0	7	116.89
Lumilux Combi Light white	20	pcs	800.81	10%	80	132	22	4	4	8	8	0	16	274.28
ceiling light 2x16W round	160	pcs	21,671.89	10%	2167	3576	596	108	108	217	217	0	433	7,422.62
ceiling light 1x36W	225	pcs	30,262.23	10%	3026	4993	832	151	151	303	303	0	605	10,364.81
ceiling light 2x36W with	30	pcs	6,768.90	10%	677	1117	186	34	34	68	68	0	135	2,318.35
Lightbar (Meter)	806	m	8,034.28	10%	803	1326	221	40	40	80	80	0	161	2,751.74
Lamps for Lightbar 1x36W	80	pcs	10,769.90	10%	1076	1775	296	54	54	108	108	0	215	3,685.27
Lamps for lightbar 2x36W	185	pcs	41,741.56	10%	4174	6887	1148	209	209	417	417	0	835	14,296.48
Safetylight for Lightbar	30	pcs	4,145.46	10%	415	684	114	21	21	41	41	0	83	1,419.82

Description of Goods	Qty	Unit	Clf (EURO)	I/D Rate	Imp Duty	Imp VAT	Imp NHIL	Eco Levy	EDALF	Insp Fee	W/Tax	Proc Fee	S.I.L.	TOTAL (EURO)
Emergency light 2x8W 1H	80	pcs	14,067.72	10%	1407	2321	387	70	70	141	141	0	281	4,818.19
wall mounted light for bedrooms	95	pcs	49,134.24	10%	4913	8107	1351	246	246	491	491	0	983	16,828.48
Insektizid light ceiling mounted	5	pcs	1,636.09	10%	164	270	45	8	8	16	16	0	33	560.36
Insektizid light wall mounted	5	pcs	1,927.78	10%	193	318	53	10	10	19	19	0	39	660.26
metal halide lamp PG12.70W	5	pcs	528.92	10%	53	87	15	3	3	5	5	0	11	181.50
fluorescent tube 8W / 840	220	pcs	206.50	10%	21	34	6	1	1	2	2	0	4	70.73
fluorescent tube 18W / 840	35	pcs	142.22	10%	14	23	4	1	1	1	1	0	3	48.71
fluorescent tube 36W / 840	915	pcs	3,718.08	10%	372	613	102	19	19	37	37	0	74	1,273.44
fluorescent tube TLS 39W / 840	110	pcs	496.65	10%	50	82	14	2	2	5	5	0	10	170.10
fluorescent tube TLS 24W / 840	110	pcs	496.65	10%	50	82	14	2	2	5	5	0	10	170.10
compact fluorescent tube G23	365	pcs	1,647.97	10%	165	272	45	8	8	16	16	0	33	564.43
compact fluorescent tube G24d	90	pcs	1,176.27	10%	118	194	32	6	6	12	12	0	24	402.87
compact fluorescent tube Master	35	pcs	457.44	10%	46	75	13	2	2	5	5	0	9	166.67
Poller light 1.2m	20	pcs	26,330.16	10%	2633	4344	724	132	132	263	263	0	527	9,018.08
Earth wire 10 mm	2820	m	11,123.95	10%	1112	1835	306	56	56	111	111	0	222	3,809.95
Earth wire 8 mm	185	m	520.95	10%	62	86	14	3	3	5	5	0	10	178.42
multiple connector 8/10	285	pcs	1,442.84	10%	144	238	40	7	7	14	14	0	29	494.07
Connection clamp for cable lock M8	440	pcs	2,572.11	10%	257	424	71	13	13	26	26	0	51	880.95
3x6 box	206	pcs	808.66	10%	81	133	22	4	4	8	8	0	16	276.96
Earth bar	30	pcs	324.37	10%	32	54	9	2	2	3	3	0	6	111.10
cut off pieces Cu / 2767	75	pcs	451.79	10%	45	75	12	2	2	5	5	0	9	154.74
wire Ye 4mm2 yegn	735	m	209.59	10%	21	35	6	1	1	2	2	0	4	71.78
wire Y1 16mm2 yegn	760	m	641.13	10%	64	106	18	3	3	6	6	0	13	219.59
Distribution board protector	20	pcs	9,403.03	10%	940	1552	259	47	47	94	94	0	188	3,220.54
coax cable RG59BU	735	m	410.46	10%	41	68	11	2	2	4	4	0	8	140.58
coax cable RG59 outdoor/underground	185	m	222.01	10%	22	37	6	1	1	2	2	0	4	76.04
socket antenna	15	pcs	135.45	10%	14	22	4	1	1	1	1	0	3	46.39

CUM BILDIKURU

SHANA REVENUE AUTHORITY

(CUSTOMS DIVISION)

P. O. BOX 8, ACCRA

Description of Goods	Qty	Unit	CIF (EURO)	I/D Rate	Imp Duty	Imp VAT	Imp NHIL	Eco Levy	EDAF	Insp Fee	W/Tax	Proc Fee	S.I.L.	TOTAL (EURO)
twin antenna distributor w. F-plugs	5	pcs	156,05	10%	16	26	4	1	1	2	2	0	3	53,11
Smoke detector 24V	35	pcs	1,283,74	10%	128	212	35	6	6	13	13	0	26	439,68
Fire extinguisher 6kg	20	pcs	2,756,51	10%	276	455	76	14	14	28	28	0	55	944,11
Main unit Auerswald 5020	5	pcs	5,172,03	10%	517	853	142	26	26	52	52	0	103	1,771,42
Telephone EUROSET 5020	15	pcs	1,269,48	10%	127	209	35	6	6	13	13	0	26	434,80
Corless headset Gigaset C690	15	pcs	2,680,11	10%	268	442	74	13	13	27	27	0	54	917,94
Telephone socket	35	pcs	362,21	10%	36	60	10	2	2	4	4	0	7	124,06
cable J-Y(ST)Y 2x2x0,6	735	m	376,52	10%	38	62	10	2	2	4	4	0	8	128,61
cable F-2YA2Y 10x2x0,8	735	m	1,659,25	10%	166	274	46	8	8	17	17	0	33	568,29
electrical and plumbing tools	5	lots	47,021,11	10%	4702	7758	1293	235	235	470	470	0	940	16,104,73
4x4 Pick Up	1	unit	23,000,00	5%	1150	3623	604	115	115	230	230	0	460	6,526,25
Mitsubishi Palero 7 Seater	1	unit	41,500,00	20%	8300	7470	1245	208	208	415	415	0	830	19,090,00
Water-pump stainless steel	5	pcs	11,754,56	10%	1175	1940	323	59	59	118	118	0	235	4,026,94
pressure tank 100 Liter	15	pcs	60,779,77	10%	5078	8379	1396	254	254	508	508	0	1016	17,392,07
backwash filter DN80	5	pcs	1,410,57	10%	141	233	39	7	7	14	14	0	28	483,12
armature pumping house	5	pcs	7,062,75	10%	705	1164	194	35	35	71	71	0	141	2,415,57
Accessories, flange, sealing, screws	5	lots	29,621,52	10%	2962	4888	815	148	148	296	296	0	592	2,737,64
Distributionboard for water pump	5	lots	20,698,04	10%	2069	3414	569	103	103	207	207	0	414	10,145,37
mounting parts for waterpump	5	lots	3,291,30	10%	329	543	91	16	16	33	33	0	66	7,085,65
Underground pipe PLT D50	1100	m	16,193,32	20%	3239	2915	486	81	81	162	162	0	324	1,127,27
Underground pipe PLT D32	735	m	3,327,24	20%	665	599	100	17	17	33	33	0	67	7,448,93
Underground pipe PLT D25	735	m	2,497,61	20%	500	450	75	12	12	25	25	0	50	1,530,53
Underground pipe PLT D20	735	m	2,078,43	20%	416	374	62	10	10	21	21	0	42	1,148,90
Accessories for pipe	5	lots	5,011,03	20%	1002	902	150	25	25	50	50	0	100	966,08
PVC pipe D18mm,	735	m	8,444,73	20%	1689	1520	253	42	42	84	84	0	169	2,305,07
PVC pipe D22mm,	1485	m	16,832,01	20%	3366	3030	505	84	84	168	168	0	337	3,894,68
														7,742,73

CUSTOMS

SHANA REVENUE AUTHORITY

Vamed Engineering GmbH Co KG

(CUSTOMS DIVISION)
P. O. BOX 8, ACCRA

Description of Goods	Qty	Unit	Clf (EURO)	I/D Rate	Imp Duty	Imp VAT	Imp NHIL	Eco Levy	EDAlF	Insp Fee	W/Tax	Proc Fee	S.I.L.	TOTAL (EURO)
PVC pipe D20mm,	365	m	6,720.18	20%	1144	1030	172	29	29	57	57	0	114	2,631.28
PVC pipe D20mm,	365	m	7,628.35	20%	1528	1373	229	38	38	76	76	0	153	3,509.04
Accessories for pipe	5	lots	1,551.51	20%	310	279	47	8	8	16	16	0	31	713.74
valve AV 1/2"	75	pcs	691.50	20%	138	124	21	3	3	7	7	0	14	318.09
valve AV3/4"	110	pcs	1,406.30	20%	281	253	42	7	7	14	14	0	28	646.90
valve 1"	15	pcs	256.64	20%	51	46	8	1	1	3	3	0	5	118.05
valve 5/4"	15	pcs	389.24	20%	78	70	12	2	2	4	4	0	8	179.05
valve 6/4"	15	pcs	595.26	10%	60	98	16	3	3	6	6	0	12	203.88
separation filter	5	pcs	1,551.51	10%	155	256	43	8	8	16	16	0	31	531.43
spare filter cartridge 25um	75	pcs	3,596.54	10%	360	593	99	18	18	36	36	0	72	1,231.81
fixing material	5	lots	14,105.50	10%	1411	2327	388	71	71	141	141	0	282	4,831.13
electrical heater for solar panel	5	pcs	1,015.57	10%	102	168	28	5	5	10	10	0	20	347.83
Solar panel with boiler 140 Liter	15	pcs	33,557.57	10%	3356	5537	923	168	168	336	336	0	671	11,493.47
expansion tank 8 Liter	5	pcs	611.24	10%	61	101	17	3	3	6	6	0	12	209.35
Boiler safety group against scald	5	pcs	2,444.98	10%	244	403	67	12	12	24	24	0	49	837.41
thermal mixing valve	30	pcs	1,974.71	10%	197	326	54	10	10	20	20	0	39	676.34
thermometer D80mm	30	pcs	564.25	10%	56	93	16	3	3	6	6	0	11	193.26
valve 1" incl. cleanout valve	30	pcs	512.21	10%	51	85	14	3	3	5	5	0	10	175.43
non return valve 1"	15	pcs	340.76	10%	34	56	9	2	2	3	3	0	7	116.71
Pipe set with insulation	255	m	21,511.49	10%	2151	3549	592	108	108	215	215	0	430	7,367.69
Moulding material and cover material	5	lots	1,175.44	10%	118	194	32	6	6	12	12	0	24	402.59
WC01 saian wc	50	pcs	31,126.01	10%	3113	5136	856	156	156	311	311	0	623	10,660.66
WC02 toilet boll	20	pcs	3,129.59	10%	313	516	86	16	16	31	31	0	63	1,071.89
Handicap WC03 toilet boll	5	pcs	1,722.76	10%	172	284	47	9	9	17	17	0	34	590.05
UR01 Plasoil	15	pcs	6,234.59	10%	623	1029	171	31	31	62	62	0	125	2,135.35
WB02 wash basin standard 60cm	30	pcs	6,093.44	10%	609	1005	168	30	30	61	61	0	122	2,087.00
WB03 wash basin standard 6cm	20	pcs	9,140.45	10%	914	1508	251	46	46	91	91	0	183	3,130.60

Description of Goods	Qty	Unit	CIF (EURO)	I/D Rate	Imp Duty	Imp VAT	Imp NHIL	Eco Levy	EDAIF	Insp Fee	W/Tax	Proc Fee	S.I.L.	TOTAL (EURO)
WB06 wash basin medical area	45	pcs	24,966.87	10%	2497	4120	687	125	125	250	250	0	499	8,561.15
SB01 shower base w. tiles	30	pcs	23,810.21	10%	2381	3929	655	119	119	238	238	0	476	8,155.00
SB04 handicap shower base w. tiles	5	pcs	4,871.07	10%	487	804	134	24	24	49	49	0	97	1,668.34
SB03 shower base w. tiles	5	pcs	3,968.37	10%	397	655	109	20	20	40	40	0	79	1,359.17
KR01 Wash basin 86x50cm	15	pcs	10,043.03	10%	1004	1657	276	50	50	100	100	0	201	3,439.74
KR03 Wash basin staff rest	5	pcs	409.08	10%	41	67	11	2	2	4	4	0	8	140.11
SI01 sink for personal house	5	pcs	1,589.21	10%	159	262	44	8	8	16	16	0	32	544.31
Laundry sink	5	pcs	829.92	10%	83	137	23	4	4	8	8	0	17	284.25
extension baby wash	15	pcs	214.58	10%	21	35	6	1	1	2	2	0	4	73.49
CS01 cleaning sink	20	pcs	7,259.61	10%	726	1198	200	36	36	73	73	0	145	2,486.42
Angle valve, siphon	35	pcs	474.07	10%	47	78	13	2	2	5	5	0	9	162.37
Angle valve, siphon	35	pcs	2,567.06	10%	257	424	71	13	13	26	26	0	51	879.22
valve AV 1/2"	5	pcs	112.82	10%	11	19	3	1	1	1	1	0	2	38.64
WMO1 w/m connection	15	pcs	705.23	10%	71	116	19	4	4	7	7	0	14	241.54
DF01 Draw off fitting	15	pcs	705.23	10%	71	116	19	4	4	7	7	0	14	241.54
ME01 Children bath tube	5	pcs	902.76	10%	90	149	25	5	5	9	9	0	18	309.19
ME02 Laboratory furniture	15	pcs	705.23	20%	141	127	21	4	4	7	7	0	14	324.40
Underground fitting cw	5	pcs	799.33	20%	160	144	24	4	4	8	8	0	16	367.69
waste water pipe DN32	75	m	437.54	20%	88	79	13	2	2	4	4	0	9	201.27
waste water pipe DN50	440	m	3,476.53	20%	695	626	104	17	17	35	35	0	70	1,599.20
waste water pipe DN100	220	m	3,724.86	20%	745	670	112	19	19	37	37	0	74	1,713.43
maintenance pipe DN50	15	pcs	225.63	20%	45	41	7	1	1	2	2	0	5	103.79
maintenance pipe DN100	5	pcs	206.86	20%	41	37	6	1	1	2	2	0	4	95.15
floor trap DN50	60	pcs	2,482.29	20%	496	447	74	12	12	25	25	0	50	1,141.85
floor trap DN100	95	pcs	8,040.05	20%	1608	1447	241	40	40	80	80	0	161	3,698.42
floor trap insert	95	pcs	485.36	20%	97	87	15	2	2	5	5	0	10	223.27
Gum sealings for pipe connections	95	pcs	169.31	20%	34	30	5	1	1	2	2	0	3	77.88

COMMISSIONER

SHANA REVENUE AUTHORITY

(CUSTOMS DIVISION)

P. O. BOX 8, ACCRA

Vaimed Engineering GmbH Co KG

Description of Goods	Qty	Unit	CIF (EURO)	I/D Rate	Imp Duty	Imp VAT	Imp NHIL	Eco Levy	EDALF	Insp Fee	W/Tax	Proc Fee	S.I.L.	TOTAL (EURO)
grid stainless steel for floor trap	35	pcs	286.15	20%	53	48	8	1	1	3	3	0	5	122.43
Insulation for pipe D50	440	m	198.86	20%	40	36	6	1	1	2	2	0	4	91.38
Insulation for pipe D100	220	m	188.20	20%	38	34	6	1	1	2	2	0	4	86.57
roof cap D100	75	pcs	704.87	20%	141	127	21	4	4	7	7	0	14	324.24
string ventilation pipe PVC	295	m	4,994.89	20%	999	899	150	25	25	50	50	0	100	2,297.56
room ventilation Turbo Ventura	15	pcs	5,496.39	20%	1099	989	165	27	27	55	55	0	110	2,528.34
Typ AC3 air con unit split 2KW	60	pcs	56,980.00	20%	11392	10253	1709	285	285	570	570	0	1139	26,201.60
Typ AC3a air con unit split 4KW	5	pcs	7,616.05	20%	1523	1371	228	38	38	76	76	0	152	3,503.38
Typ CV1 ceiling fan nordik 190	155	pcs	33,517.76	20%	6704	6033	1006	168	168	335	335	0	670	15,418.17
Typ CV2 ceiling fan nordik 1110	20	pcs	4,896.19	20%	979	881	147	24	24	49	49	0	98	2,251.79
Typ CV3 fan controller	175	pcs	24,743.26	20%	4949	4454	742	124	124	247	247	0	495	11,381.90
group controller (40CKX900-101)	15	pcs	2,085.21	10%	209	344	57	10	10	21	21	0	42	714.18
connection cable (40CKX300-103)	15	pcs	641.60	10%	64	106	18	3	3	6	6	0	13	219.75
refrigerant fluid R410A	5	pcs	1,598.06	10%	160	264	44	8	8	16	16	0	32	647.34
vacuum pump	5	pcs	2,325.81	10%	233	384	64	12	12	23	23	0	47	796.59
manometer r22	5	pcs	93.86	10%	9	15	3	0	0	1	1	0	2	32.15
gas bottle connection	5	pcs	259.02	10%	26	43	7	1	1	3	3	0	5	88.71
bending tool	5	pcs	196.64	10%	20	32	5	1	1	2	2	0	4	67.35
pipe cutter	5	pcs	126.54	10%	13	21	3	1	1	1	1	0	3	43.34
flange tool	5	pc	849.53	10%	85	140	23	4	4	8	8	0	17	290.96
isolated ac pipe 6mm	735	m	2,812.00	20%	562	506	84	14	14	28	28	0	56	1,293.52
isolated ac pipe 12mm	365	m	2,211.74	20%	442	398	66	11	11	22	22	0	44	1,017.40
Armaflex Tape B-1	5	pcs	240.18	20%	48	43	7	1	1	2	2	0	5	110.49
Fixing material	735	m	20,347.69	20%	4070	3663	610	102	102	203	203	0	407	9,359.94
Underground pipe PLT D63	1100	m	22,963.41	20%	4593	4133	689	115	115	230	230	0	459	10,563.17
pipng boreholestation with 2" pipes	5	pcs	7,069.50	20%	1414	1273	212	35	35	71	71	0	141	3,251.97
pump,drinking water, waterpump	5	pcs	11,281.50	0%	0	1692	282	56	56	113	113	113	226	2,651.15

COMMISSIONER

SHANA REVENUE AUTHORITY

(CUSTOMS DIVISION)

P. O. BOX 8, ACCRA

Varned Engineering GmbH Co KG

Description of Goods	Qty	Unit	CF (EURO)	I/D Rate	Imp Duty	Imp VAT	Imp NHIL	Eco Levy	EDAF	Insp Fee	W/Tax	Proc Fee	S.I.L.	TOTAL (EURO)
armatures for boreholestation	5	pcs	2,489.18	10%	249	411	68	12	12	25	25	0	50	852.54
Distributionboard for automatisaton	5	lots	5,174.40	10%	517	854	142	26	26	52	52	0	103	1,772.23
liquid level measurement with stick	20	pcs	14,020.19	10%	1402	2313	386	70	70	140	140	0	280	4,801.92
liquid level measurement with switch	45	pcs	7,485.36	10%	749	1235	206	37	37	75	75	0	150	2,563.73
Distributionboard for automation	5	lots	7,758.63	10%	776	1280	213	39	39	78	78	0	155	2,657.33
Medical Gas System	5	pcs	228,719.24	10%	22872	37739	6290	1144	1144	2287	2287	0	4574	78,336.34
Cost of foods for HVAC	5	lots	67,706.83	10%	6771	11172	1862	339	339	677	677	0	1354	23,189.59
Steel for Polycilnic	189500	kg	575,603.83	10%	57560	94975	15829	2878	2878	5756	5756	0	11512	197,144.31
Detailed planning; Installation	1	lot	5,677.55	10%	568	937	156	28	28	57	57	0	114	1,944.56
Mounting tool (provisional crane)	2	lots	4,471.07	10%	447	738	123	22	22	45	45	0	89	1,531.34
Provisional mounting brackets	1	lot	766.47	10%	77	126	21	4	4	8	8	0	15	262.52
Synthetic fibre	12250	kg	98,482.72	10%	9848	16250	2708	492	492	985	985	0	1970	33,730.33
Insulated roof sheets for Main building	5737.5	m2	167,760.84	20%	33552	30197	5033	839	839	1678	1678	0	3355	77,169.99
Insulated roof sheets for connection	191.2	m2	2,076.11	20%	415	374	62	10	10	21	21	0	42	955.01
Insulated roof sheets for connection	221.2	m2	2,401.86	20%	480	432	72	12	12	24	24	0	48	1,104.85
Insulated sheets for Guard building	75	m2	814.37	20%	163	147	24	4	4	8	8	0	16	374.61
Insulated roof sheets for Staff building	1050	m2	30,701.33	20%	6140	5526	921	154	154	307	307	0	614	14,122.61
Trapezoidal sheets for Service building	841.5	m2	9,137.27	20%	1827	1645	274	46	46	91	91	0	183	4,203.14
Trapezoidal sheets for MCH	244.75	m2	2,667.57	20%	532	478	80	13	13	27	27	0	53	1,222.48
roof ridge outside	495	m1	3,253.02	20%	651	586	98	16	16	33	33	0	65	1,496.39
roof ridge inside	495	m1	2,543.40	20%	509	458	76	13	13	25	25	0	51	1,169.96
filler	1020	m1	2,605.99	20%	621	469	78	13	13	26	26	0	52	1,198.76
metal plates	1020	m1	12,885.19	20%	2577	2319	387	64	64	129	129	0	258	5,927.19
Vergeboard profile	450	m1	3,557.69	20%	712	640	107	18	18	36	36	0	71	1,636.54
gutterplates	1095	m1	3,730.15	20%	746	671	112	19	19	37	37	0	75	1,716.87
water controls plate	1095	m1	4,833.65	20%	967	870	145	24	24	48	48	0	97	2,223.48
mono-pitch connection	120	m1	529.72	20%	106	95	16	3	3	5	5	0	11	243.67

COMMISSIONER

SHANA REVENUE AUTHORITY

Named Engineering GmbH Co KG

(CUSTOMS DIVISION)

P. O. BOX 8, ACCRA

Description of Goods	Qty	Unit	CI (EURO)	I/D Rate	Imp Duty	Imp VAT	Imp NHIL	Eco Levy	EDALF	Insp Fee	W/Tax	Proc Fee	S.I.L.	TOTAL (EURO)
roof ridge outside	76	m1	492.88	20%	99	89	15	2	2	5	5	0	10	226.73
roof ridge inside	75	m1	385.36	20%	77	69	12	2	2	4	4	0	8	177.27
filler inside	165	m1	421.56	20%	84	76	13	2	2	4	4	0	8	193.92
filler outside	315	m1	804.79	20%	161	145	24	4	4	8	8	0	16	370.20
metal plates outside	165	m1	1,826.75	20%	365	329	55	9	9	18	18	0	37	840.31
metal plates inside	315	m1	3,085.04	20%	617	555	93	15	15	31	31	0	62	1,419.12
vergeboard profile	195	m1	1,541.67	20%	308	278	46	8	8	15	15	0	31	709.17
gutterplates	120	m1	408.78	20%	82	74	12	2	2	4	4	0	8	188.04
water control plate	120	m1	529.72	20%	106	95	16	3	3	5	5	0	11	243.67
screws, etc	5	pcs	23,547.62	20%	4710	4239	706	118	118	235	235	0	471	10,831.91
Gutter 2 m	55	pcs	921.96	20%	184	166	28	5	5	9	9	0	18	424.10
Gutter 4 m	285	pcs	8,005.55	20%	1601	1441	240	40	40	80	80	0	160	3,682.55
Connecting piece for Gutter	385	pcs	5,054.79	20%	1011	910	152	25	25	51	51	0	101	2,325.20
Endpiece for Gutter	105	pcs	374.08	20%	75	67	11	2	2	4	4	0	7	172.08
Connection piece Gutter - Downpipe	90	pcs	1,364.31	20%	273	246	41	7	7	14	14	0	27	627.58
Mounting bracket for Gutter	1430	pcs	8,139.19	20%	1628	1465	244	41	41	81	81	0	163	3,744.03
Downpipe 1 m	90	pcs	892.72	20%	177	159	26	4	4	9	9	0	18	406.05
Downpipe 4 m	90	pcs	2,736.02	20%	547	492	82	14	14	27	27	0	55	1,258.11
Downpipe bow 67°	190	pcs	919.62	20%	184	166	28	5	5	9	9	0	18	423.03
Downpipe bow 45°	30	pcs	167.55	20%	32	28	5	1	1	2	2	0	3	72.47
Downpipe branch 45°/100	15	pcs	342.36	20%	68	62	10	2	2	3	3	0	7	157.48
Connecting piece for Downpipe	180	pcs	707.71	20%	142	127	21	4	4	7	7	0	14	326.54
Multipurpose connector	90	pcs	1,769.27	20%	354	318	53	9	9	18	18	0	35	813.86
Mounting bracket for Downpipe	390	pcs	2,230.85	20%	446	402	67	11	11	22	22	0	45	1,026.19
PP-Pipe DN50mm; length 0.5m	375	pcs	473.72	20%	95	85	14	2	2	5	5	0	9	217.91
PP-Pipe DN60mm; length 1.0m	375	pcs	681.31	20%	136	123	20	3	3	7	7	0	14	313.40
PVC-Pipe DN100; length 5m	190	pcs	4,660.13	20%	932	839	140	23	23	47	47	0	93	2,143.66

COMMISSIONER

GHANA REVENUE AUTHORITY

(CUSTOMS DIVISION)

P. O. BOX 8, ACCRA

Valmet Engineering GmbH Co KG

Description of Goods	Qty	Unit	Clf (EURO)	I/D Rate	Imp Duty	Imp VAT	Imp NHIL	Eco Levy	EDAlF	Insp Fee	W/Tax	Proc Fee	S.I.L.	TOTAL (EURO)
PVC-Pipe DN125, length 5m	70	pcs	1,986.15	20%	397	358	60	10	10	20	20	0	40	913.63
PVC-Pipe DN150, length 5m	340	pcs	15,148.64	20%	3030	2727	454	76	76	151	151	0	303	6,968.33
PP-Elbow DN50/45	185	pcs	154.93	20%	31	28	5	1	1	2	2	0	3	71.27
PP-Elbow DN50/87	300	pcs	251.23	20%	50	45	8	1	1	3	3	0	5	115.57
PVC-Elbow DN100/45	140	pcs	313.97	20%	63	57	9	2	2	3	3	0	6	144.43
PVC-Elbow DN125/45	140	pcs	540.50	20%	108	97	16	3	3	5	5	0	11	248.63
PVC-Elbow DN150/45	85	pcs	413.82	20%	83	74	12	2	2	4	4	0	8	190.36
PP-Branch DN50/50/45	70	pcs	302.05	20%	60	54	9	2	2	3	3	0	6	138.94
PP-Branch DN50/50/87	90	pcs	388.34	20%	78	70	12	2	2	4	4	0	8	178.64
PP-Branch DN100/100/87	25	pcs	107.87	20%	22	19	3	1	1	1	1	0	2	49.62
PVC-Branch DN100/100/45	20	pcs	95.38	20%	19	17	3	0	0	1	1	0	2	43.88
PVC-Branch DN125/100/87	35	pcs	219.58	20%	44	40	7	1	1	2	2	0	4	101.01
PVC-Branch DN150/125/45	90	pcs	1,096.05	20%	219	197	33	5	5	11	11	0	22	504.18
PVC-Branch DN150/150/45	75	pcs	831.41	20%	166	150	25	4	4	8	8	0	17	382.45
PVC-Clean out DN125 with cover	15	pcs	1,876.36	20%	375	338	56	9	9	19	19	0	38	863.12
PVC-Clean out DN150 with cover	15	pcs	2,352.42	20%	470	423	71	12	12	24	24	0	47	1,082.11
PP-Reducer DN100/DN50	195	pcs	354.28	20%	71	64	11	2	2	4	4	0	7	162.97
PVC-Reducer DN125/DN100	100	pcs	366.20	20%	73	66	11	2	2	4	4	0	7	168.45
PVC-Reducer DN150/DN100	15	pcs	67.07	20%	13	12	2	0	0	1	1	0	1	30.85
PP-Flange DN 50	95	pcs	107.87	20%	22	19	3	1	1	1	1	0	2	49.62
PVC-Flange DN 100	430	pcs	1,232.88	20%	247	222	37	6	6	12	12	0	25	567.12
PVC-Flange DN 125	430	pcs	1,751.66	20%	350	315	53	9	9	18	18	0	35	805.77
PVC-Flange DN 150	490	pcs	2,455.11	20%	491	442	74	12	12	25	25	0	49	1,129.35
PVC-Filter pipe DN 100, length 6m	40	pcs	1,199.10	20%	240	216	36	6	6	12	12	0	24	651.68
Geotextil 200/4/100	15	pcs	5,519.64	20%	1104	994	166	28	28	55	55	0	110	2,539.03
PVC-Flexible cable duct P	325	pcs	1,577.65	20%	316	284	47	8	8	16	16	0	32	725.72
Door frame and leaf	270	pcs	204,033.98	20%	40807	36726	6121	1020	1020	2040	2040	0	4081	93,855.63

COMMISSIONER
KENYA REVENUE AUTHORITY
(CUSTOMS DIVISION)
P. O. BOX 8, ACCRA

Description of Goods	Qty	Unit	CF (EURO)	I/D Rate	Imp Duty	Imp VAT	Imp NHIL	Eco Levy	EDAI	Insp Fee	W/Tax	Proc Fee	S.I.L.	TOTAL (EURO)
Door frame and leaf	145	pcs	142,091.95	20%	28,418	25,577	4,263	710	710	14,211	14,211	0	28,421	65,362.30
Window frame	520	pcs	94,474.37	20%	18,895	17,005	2,834	472	472	9,451	9,451	0	18,899	43,458.21
Window frame with ventilation fins	40	pcs	29,057.68	20%	5,812	5,230	872	145	145	291	291	0	5,811	13,366.53
Louver 430/584	25	pcs	3,690.41	10%	369	609	101	18	18	37	37	0	74	1,263.96
Louver 430/584 - frosted glass	115	pcs	20,893.37	10%	2,089	3,447	575	104	104	209	209	0	418	7,155.98
Louver 830/445	50	pcs	5,393.67	10%	539	890	148	27	27	54	54	0	108	1,847.33
Louver 830/1283	140	pcs	38,563.40	10%	3,856	6,033	1,005	183	183	366	366	0	731	12,522.96
Louver 830/1283 - frosted glass	5	pcs	1,689.07	10%	169	279	46	8	8	17	17	0	34	578.51
Glass hatch	10	pcs	5,890.45	10%	589	972	162	29	29	59	59	0	118	2,017.48
Louver 930/445	35	pcs	3,775.67	10%	378	623	104	19	19	38	38	0	76	1,293.13
Louver 1030/445	5	pcs	539.37	10%	54	89	15	3	3	5	5	0	11	184.73
Louver 1030/584 - frosted glass	80	pcs	14,534.52	10%	1,453	2,398	400	73	73	145	145	0	291	4,978.07
Louver 1230/445	45	pcs	4,854.30	10%	485	801	133	24	24	49	49	0	97	1,662.60
Louver 795/445	20	pcs	2,157.47	10%	216	356	59	11	11	22	22	0	43	738.93
Louver 895/1283	40	pcs	10,446.68	10%	1,045	1,724	287	52	52	104	104	0	209	3,577.99
Louver 830/1283	130	pcs	33,951.73	10%	3,395	5,602	934	170	170	340	340	0	679	11,628.47
Mosquito net 430/590	150	pcs	15,542.28	0%	0	0	0	78	78	155	155	0	311	932.54
Mosquito net 830/450	5	pcs	618.08	0%	0	0	0	3	3	5	5	0	10	31.08
Mosquito net 830/1290	220	pcs	25,293.47	0%	0	0	0	126	126	253	253	0	506	1,517.61
Mosquito net 930/450	35	pcs	3,626.53	0%	0	0	0	18	18	36	36	0	73	217.59
Mosquito net 1030/450	5	pcs	526.17	0%	0	0	0	3	3	5	5	0	11	31.51
Mosquito net 1030/590	75	pcs	7,877.60	0%	0	0	0	39	39	79	79	0	158	472.66
Mosquito net 795/450	10	pcs	1,036.15	0%	0	0	0	5	5	10	10	0	21	62.17
Mosquito net 780/150	10	pcs	1,561.33	0%	0	0	0	8	8	16	16	0	31	93.68
Mosquito net 1450/2150	5	pcs	929.70	0%	0	0	0	5	5	9	9	0	19	55.78
Mosquito net 895/1290	20	pcs	2,384.57	0%	0	0	0	12	12	24	24	0	48	143.07
Mosquito net 310/430	20	pcs	2,384.57	0%	0	0	0	12	12	24	24	0	48	143.07

COMMISSIONER

SHAWA REVENUE AUTHORITY

(CUSTOMS DIVISION)

P. O. BOX 8, ACCRA

Description of Goods	Qty	Unit	Clf (EURO)	I/D Rate	Imp Duty	Imp VAT	Imp NHIL	Eco Levy	EDAIF	Insp Fee	W/Tax	Proc Fee	S.I.L.	TOTAL (EURO)
Mosquito net 1230/450	5	pcs	696.14	0%	0	0	0	3	3	6	6	6	12	35.77
Spare parts	1	pcs	834.60	10%	83	138	23	4	4	8	8	0	17	285.85
Burglar protection for frame 430/590	195	m	332.14	10%	33	55	9	2	2	3	3	0	7	113.76
Burglar protection for frame 830/450	32.4	m	65.19	10%	6	9	2	0	0	1	1	0	1	18.90
Burglar protection for frame 830/1290	1584	m	2,697.97	10%	270	445	74	13	13	27	27	0	54	924.05
Burglar protection for frame 930/450	24	m	40.88	10%	4	7	1	0	0	0	0	0	1	14.00
Burglar protection for frame 1030/590	181.5	m	309.14	10%	31	51	9	2	2	3	3	0	6	105.88
Burglar protection for frame 1630/450	102	m	173.73	10%	17	29	5	1	1	2	2	0	3	59.50
Burglar protection for frame 1830/1290	76	m	129.45	10%	13	21	4	1	1	1	1	0	3	44.34
Double cylinders lock for 40 mm doors	210	pcs	5,848.16	10%	585	965	161	29	29	58	58	0	117	2,002.99
Double cylinders lock for 60 mm doors	50	pcs	1,716.04	10%	172	283	47	9	9	17	17	0	34	587.74
Knob cylinder	10	pcs	278.48	10%	28	46	8	1	1	3	3	0	6	95.38
Cylinder Padlock	10	pcs	214.33	10%	21	35	6	1	1	2	2	0	4	73.41
Double cylinders lock for Fence gates	10	pcs	278.48	10%	28	46	8	1	1	3	3	0	6	95.38
Main and Group keys	710	pcs	4,393.85	10%	439	725	121	22	22	44	44	0	88	1,504.89
Key box for 150 keys	5	pcs	1,383.41	10%	138	228	38	7	7	14	14	0	28	473.82
Lock for Key box	5	pcs	112.13	10%	11	19	3	1	1	1	1	0	2	38.41
Insulation panels for Steel columns	300	m2	2,265.34	10%	227	374	62	11	11	23	23	0	45	775.88
Insulation panels for Walls	300	m2	5,501.64	10%	550	908	151	28	28	55	55	0	110	1,884.28
Fixing bolts	150	packs	7,302.74	10%	730	1205	201	37	37	73	73	0	146	2,501.19
Casalgrande Meteor beige	3996.85	m2	61,836.52	10%	6184	10203	1701	309	309	618	618	0	1237	21,179.01
Casalgrande Meteor noce	304	m2	4,703.28	10%	470	776	129	24	24	47	47	0	94	1,610.87
Casalgrande Marte Crema Marfil	572	m2	9,336.72	10%	934	1541	257	47	47	93	93	0	187	3,197.83
Casalgrande Marte Crema Marfil	104	m2	1,697.59	10%	170	280	47	8	8	17	17	0	34	581.42
Casalgrande Meteor beige	7350	pc	14,605.49	10%	1461	2410	402	73	73	146	146	0	292	5,002.38
Casalgrande Meteor noce	1260	pc	2,503.80	10%	250	413	69	13	13	25	25	0	50	857.55
Villeroy & Boch 1106-WM00	3100	m2	28,600.64	10%	2860	4719	787	143	143	286	286	0	572	9,795.72

COMMISSIONER

GRANA REVENUE AUTHORITY

(CUSTOMS DIVISION)

P. O. BOX 8, ACCRA

Varned Engineering GmbH Co KG

Description of Goods	Qty	Unit	CIF (EURO)	I/D Rate	Imp Duty	Imp VAT	Imp NHIL	Eco Levy	EDAIF	Insp Fee	W/Tax	Proc Fee	S.I.L.	TOTAL (EURO)
Thin-bed tile adhesive	120000	kg	54,504.44	10%	5450	8993	1499	273	273	545	545	0	1090	18,667.77
Primer	1000	l	4,286.55	10%	429	707	118	21	21	43	43	0	86	1,468.14
Liquid insulating coating for wet rooms	10000	kg	29,381.30	10%	2938	4848	808	147	147	294	294	0	588	10,063.10
Insulating tape for edges	3000	m	3,619.44	10%	362	597	100	18	18	36	36	0	72	1,239.66
Tile grouting cement-grey	11500	kg	11,752.52	10%	1175	1939	323	59	59	118	118	0	235	4,025.24
Tile grouting white	7500	kg	12,020.78	10%	1202	1983	331	60	60	120	120	0	240	4,117.12
Facade filler (inside/outside)	25520	kg	54,334.12	10%	5433	8965	1494	272	272	543	543	0	1087	18,609.44
Primer (outside)	6960	kg	27,661.01	10%	2766	4564	761	138	138	277	277	0	553	9,473.89
Facade paint	3380	kg	16,311.59	10%	1631	2691	449	82	82	163	163	0	326	5,586.72
Base paint	625	kg	3,016.20	10%	302	498	83	15	15	30	30	0	60	1,033.05
Primer (inside)	1000	kg	2,271.02	10%	227	375	62	11	11	23	23	0	45	777.82
Inside paint	9900	kg	16,862.31	10%	1686	2782	464	84	84	169	169	0	337	5,775.34
Latex paint	3126	kg	14,193.87	10%	1419	2342	390	71	71	142	142	0	284	4,861.40
Epoxy paint	1000	kg	4,967.85	10%	497	820	137	25	25	50	50	0	99	1,701.49
Metal paint base coat	460	l	5,628.15	10%	563	929	155	28	28	56	56	0	113	1,927.64
Metal paint	610	kg	7,792.43	10%	779	1286	214	39	39	78	78	0	156	2,668.91
Metal paint primer	20	kg	306.30	10%	31	51	8	2	2	3	3	0	6	104.91
Cleaner / Degreaser	250	l	2,625.87	10%	263	433	72	13	13	26	26	0	53	899.36
Handrail	235	m	5,386.93	10%	539	889	148	27	27	54	54	0	108	1,845.02
Handrail Endpiece 90°	165	pcs	1,452.03	10%	145	240	40	7	7	15	15	0	29	497.32
Wall bracket	275	pcs	2,771.35	10%	277	457	76	14	14	28	28	0	55	949.19
Connecting piece	20	pcs	491.11	10%	49	81	14	2	2	5	5	0	10	168.20
Cornerguard	255	m	2,189.76	10%	219	361	60	11	11	22	22	0	44	749.99
Mounting glue	260	pcs	1,328.65	10%	133	219	37	7	7	13	13	0	27	455.03
Main signboard	5	pcs	2,058.11	10%	206	340	57	10	10	21	21	0	41	704.90
Overview signboard	5	pcs	3,633.63	10%	363	600	100	18	18	36	36	0	73	1,244.52
Orientation signboard 1 line	30	pcs	1,788.43	10%	179	295	49	9	9	18	18	0	36	612.54

COMMISSIONER

KENYA REVENUE AUTHORITY

(CUSTOMS DIVISION)

Nairobi Engineering GmbH Co KG

P. O. BOX 8, ACCRA

Description of Goods	Qty	Unit	CIF (EURO)	I/D Rate	Imp Duty	Imp VAT	Imp NHIL	Eco Levy	EDAI	Insp Fee	W/Tax	Proc Fee	S.I.L.	TOTAL (EURO)
Orientation signboard 2 lines	5	pcs	376.14	10%	38	62	10	2	2	4	4	0	8	128.83
Orientation signboard 6 lines	5	pcs	823.24	10%	82	136	23	4	4	8	8	0	16	281.96
Door plate	225	pcs	7,984.05	10%	798	1317	220	40	40	80	80	0	160	2,734.54
Sticker WC	50	pcs	425.82	10%	43	70	12	2	2	4	4	0	9	145.84
Sticker Shower	25	pcs	212.91	10%	21	35	6	1	1	2	2	0	4	72.92
Sticker Handicapped	10	pcs	85.16	10%	9	14	2	0	0	1	1	0	2	29.17
Sticker No Entry	30	pcs	255.49	10%	26	42	7	1	1	3	3	0	5	87.51
Fence	5	pcs	36,620.17	10%	3662	6042	1007	183	183	366	366	0	732	12,542.41
Gate	5	pcs	23,065.03	10%	2307	3806	634	115	115	231	231	0	461	7,899.77
Pedestrian gate	5	pcs	3,860.73	10%	386	637	106	19	19	39	39	0	77	1,322.30
Set of various tools	1	pc	29,156.19	10%	2916	4811	802	146	146	292	292	0	583	9,985.99
Set of various tools	1	pc	28,414.67	10%	2841	4688	781	142	142	284	284	0	568	9,732.02
Set of measuring instruments	1	pc	611.76	10%	61	101	17	3	3	6	6	0	12	209.53
Set of painters tools	1	pc	6,532.37	10%	653	1078	180	33	33	66	66	0	131	2,237.34
Steel mesh	140	rolls	7,123.90	10%	712	1175	196	36	36	71	71	0	142	2,439.94
Fixing accessories	15	boxes	834.60	10%	83	138	23	4	4	8	8	0	17	285.85
Horizontal insulation	6400	m	6,268.01	10%	627	1034	172	31	31	63	63	0	125	2,146.79
OSB Wood board 25/67.5/2.500 mm	260	pcs	4,793.84	10%	479	791	132	24	24	48	48	0	96	1,641.89
Square timber 50/50 mm, length 4 m	70	pcs	248.39	10%	25	41	7	1	1	2	2	0	5	85.07
Square timber 50/80 mm, length 4 m	70	pcs	397.43	10%	40	66	11	2	2	4	4	0	8	136.12
Acyl	250	pcs	745.18	10%	75	123	20	4	4	7	7	0	15	255.22
Silicone white	250	pcs	1,472.61	10%	147	243	40	7	7	15	15	0	29	504.37
Silicone grey	50	pcs	294.52	10%	29	49	8	1	1	3	3	0	6	100.87
Sealing outside colour	100	pcs	2,058.11	10%	206	340	57	10	10	21	21	0	41	704.90
Sealing inside colour	30	pcs	617.43	10%	62	102	17	3	3	6	6	0	12	211.47
Mounting glue	50	pcs	255.49	10%	26	42	7	1	1	3	3	0	5	87.51
Mounting glue spender	1	pc	347.75	10%	35	57	10	2	2	3	3	0	7	119.10

COMMISSIONER

CHIEF REVENUE AUTHORITY

(CUSTOMS DIVISION)

P. O. BOX 8, ACCRA

Varned Engineering GmbH Co KG

Description of Goods	Qty	Unit	CF (EURO)	I/D Rate	Imp Duty	Imp VAT	Imp NHIL	Eco Levy	EDAIF	Insp Fee	W/Tax	Proc Fee	S.I.L.	TOTAL (EURO)
Spare battery for mounting glue	1	pc	74.94	10%	7	12	2	0	0	1	1	0	1	25.67
Gap covering PVC-profile	5000	m	14,709.94	10%	1171	1932	322	69	69	117	117	0	234	4,010.65
Tile edge profile 8 mm	175	m	347.75	10%	35	57	10	2	2	3	3	0	7	119.10
Tile edge profile 10 mm	300	m	638.72	10%	64	105	18	3	3	6	6	0	13	218.76
Tile edge profile 22 mm	200	m	880.02	10%	88	145	24	4	4	9	9	0	18	301.41
Site hut	5	pc	28,898.71	10%	2890	4768	795	144	144	289	289	0	578	9,897.81
Roof insulation	450	m2	4,317.77	10%	432	712	119	22	22	43	43	0	86	1,478.84
Nails for roof insulation	75	kg	430.07	10%	43	71	12	2	2	4	4	0	9	147.30
Shelf	20	pcs	510.70	10%	51	94	14	3	3	5	5	0	10	174.91
Table	10	pcs	709.55	20%	142	128	21	4	4	7	7	0	14	326.39
Revision opening cover inside	3	pcs	510.98	20%	102	92	15	3	3	5	5	0	10	235.05
Revision opening cover outside	26	pcs	4,720.03	20%	944	850	142	24	24	47	47	0	94	2,171.21
Rainwater grills	15	pcs	276.78	20%	55	50	8	1	1	3	3	0	6	127.32
Rainwater grill frames	15	pcs	255.49	20%	51	46	8	1	1	3	3	0	5	117.53
Roof Flashing for pipe DN150	12	pcs	532.27	20%	106	96	16	3	3	5	5	0	11	244.84
Roof Flashing for pipe DN50	22	pcs	456.22	20%	91	82	14	2	2	5	5	0	9	209.86
Grouting	125	bags	4,169.45	20%	834	751	125	21	21	42	42	0	83	1,917.95
Flowmeter O2	20	pcs	2,264.40	10%	226	0	0	11	11	23	23	0	45	339.66
Laryngoscope Adult	5	pcs	2,011.92	10%	201	0	0	10	10	20	20	0	40	301.79
Resuscitation Bag Adult	10	pcs	1,165.66	10%	117	0	0	6	6	12	12	0	23	174.85
Resuscitation Bag Baby	10	pcs	1,025.70	10%	103	0	0	5	5	10	10	0	21	153.86
Anesthesia Machine	5	pcs	144,437.10	10%	14444	0	0	722	722	1444	1444	0	2889	21,665.57
Suction Unit Venturi Direct	20	pcs	6,160.80	10%	616	0	0	31	31	62	62	0	123	924.12
Oxygen Trolley Complete	45	pcs	25,814.66	10%	2581	0	0	129	129	258	258	0	516	3,872.20
Ventilator Adult	5	pcs	57,675.39	10%	5768	0	0	288	288	577	577	0	1154	8,651.31
Clock Battery Operated Wall Mtd	30	pcs	528.69	20%	106	95	16	3	3	5	5	0	11	243.20
Chair Polypropylene Stacking	280	pcs	7,966.36	20%	1593	1434	239	40	40	80	80	0	159	3,664.53

COMMISSION

GHANA REVENUE AUTHORITY

(CUSTOMS DIVISION)

P. O. BOX 8, ACCRA

Description of Goods	Qty	Unit	CIF (EURO)	I/D Rate	Imp Duty	Imp VAT	Imp NHIL	Eco Levy	EDAIF	Insp Fee	W/Tax	Proc Fee	S.I.L.	TOTAL (EURO)
Chair Swivel With Armrest	70	pcs	16,214.35	20%	3243	2919	486	81	81	162	162	0	324	7,456.60
Stool Lab Ht-Adj With Backrest	10	pcs	2,253.31	20%	451	406	68	11	11	23	23	0	45	1,036.52
Chair Beam 4-Seater Pp	90	pcs	18,467.45	20%	3693	3324	554	92	92	185	185	0	369	8,495.03
Worktop	5	pcs	4,028.34	20%	806	725	121	20	20	40	40	0	81	1,853.03
Working Desk	45	pcs	28,041.12	20%	5608	5047	841	140	140	280	280	0	561	12,998.91
Desk, Doctor	5	pcs	2,627.87	20%	526	473	79	13	13	26	26	0	53	1,208.82
TV Colour	5	pcs	1,926.05	10%	193	318	53	10	10	19	19	0	39	659.67
Shelf For Tv Set	5	pcs	125.19	10%	13	21	3	1	1	1	1	0	3	42.88
Cupboard	10	pcs	4,141.65	10%	414	683	114	21	21	41	41	0	83	1,418.51
Cupboard Sliding Doors	5	pcs	4,080.00	10%	408	673	112	20	20	41	41	0	82	1,397.40
Cabinet Filing	20	pcs	10,221.92	10%	1022	1687	281	51	51	102	102	0	204	3,501.01
Nurse Counter	5	pcs	1,672.80	10%	167	276	46	8	8	17	17	0	33	572.93
Nurse Counter	5	pcs	5,100.00	10%	510	842	140	26	26	51	51	0	102	1,746.75
Table Writing	10	pcs	3,625.48	20%	725	653	109	18	18	36	36	0	73	1,667.72
Table Square	25	pcs	5,790.84	20%	1158	1042	174	29	29	58	58	0	116	2,663.79
Bin Pedal Operated	55	pcs	3,333.85	10%	333	550	92	17	17	33	33	0	67	1,141.84
Bin Waste Paper Plastic	85	pcs	556.61	10%	56	92	15	3	3	6	6	0	11	190.64
Curtain Track	20	pcs	10,574.38	10%	1057	1745	291	53	53	106	106	0	211	3,621.73
Curtain Track Delivery	10	pcs	9,655.36	10%	966	1593	266	48	48	97	97	0	193	3,306.96
Steam Sterilizer Tabletop	5	pcs	12,141.13	10%	1214	2003	334	61	61	121	121	0	243	4,158.34
Basket Sterilizing	5	pcs	3,741.95	10%	374	617	103	19	19	37	37	0	75	1,281.62
Table Work S/S	5	pcs	3,180.41	20%	636	572	95	16	16	32	32	0	64	1,462.99
Washer/Disinfector	5	pcs	31,300.39	10%	3130	5165	861	157	157	313	313	0	626	10,720.38
S/S Sink Unit	5	pcs	10,602.39	10%	1060	1749	292	53	53	106	106	0	212	3,631.32
Bed Hospital Ward Type	90	pcs	192,831.12	20%	38566	34710	5785	964	964	1928	1928	0	3857	88,702.32
Bed Observation/Recovery	10	pcs	17,554.20	20%	3511	3160	527	88	88	176	176	0	351	8,074.93
Holder Patient Card	40	pcs	932.61	10%	93	154	26	5	5	9	9	0	19	319.42

GHANA REVENUE AUTHORITY
(CUSTOMS DIVISION)
P. O. BOX 8, ACCRA

Description of Goods	Qty	Unit	CF (EURO)	I/D Rate	Imp Duty	Imp VAT	Imp NHIL	Eco Levy	EDALF	Insp Fee	W/Tax	Proc Fee	S.I.L.	TOTAL (EURO)
Chair Venepuncture	10	pcs	2,286.58	20%	453	408	68	14	14	23	23	0	45	1,042.63
Delivery Bed	15	pcs	65,967.11	20%	13193	11874	1979	330	330	660	660	0	1319	30,344.87
Couch Examination	15	pcs	4,333.66	20%	867	760	130	22	22	43	43	0	87	1,993.48
Couch Examination Gynae	5	pcs	7,745.73	20%	1549	1394	232	39	39	77	77	0	155	3,563.04
Locker Bedside	130	pcs	19,917.73	10%	1992	3286	548	100	100	199	199	0	398	6,821.82
Table Overbed	90	pcs	10,909.83	20%	2182	1964	327	55	55	109	109	0	218	5,018.52
Cot Child	20	pcs	9,744.70	20%	1949	1754	292	49	49	97	97	0	195	4,482.56
Bassinet W/ Mattress	20	pcs	4,209.38	10%	421	695	116	21	21	42	42	0	84	1,441.71
Trolley Stretcher	10	pcs	6,162.61	10%	615	1015	169	31	31	62	62	0	123	2,107.27
Supporting Legs	30	pcs	362.73	10%	36	60	10	2	2	4	4	0	7	124.24
Stool Revolving	30	pcs	5,200.20	10%	520	858	143	26	26	52	52	0	104	1,761.07
Cupboard Preparation Clean Utility	10	pcs	20,223.43	10%	2022	3337	556	101	101	202	202	0	404	6,926.52
Cupboard Preparation With Baby Bath	5	pcs	8,603.70	10%	860	1420	237	43	43	86	86	0	172	2,946.77
Trolley Patient Files	5	pcs	4,922.11	10%	492	812	135	25	25	49	49	0	98	1,665.82
Trolley Soiled Linen Single	10	pcs	3,755.81	10%	376	620	103	19	19	38	38	0	75	1,266.36
Trolley Waste Bag Single	10	pcs	3,240.29	10%	324	535	89	16	16	32	32	0	65	1,109.80
Trolley Dressing	10	pcs	9,974.52	10%	997	1646	274	50	50	100	100	0	199	3,416.27
Cupboard Drug Lockable Single Door	5	pcs	2,643.75	10%	264	436	73	13	13	26	26	0	53	905.48
Sluice Unit C/W Disinfecter	5	pcs	27,807.26	10%	2781	4688	765	139	139	278	278	0	556	9,523.99
Shelf Bedpans & Urinals Wall Mkd	5	pcs	1,505.90	10%	151	0	0	8	8	15	15	0	30	225.89
Sphygmomanometer Desk Type	20	pcs	6,900.48	10%	690	0	0	35	35	69	69	0	138	1,035.07
Sphygmomanometer Mobile	5	pcs	1,631.87	10%	163	0	0	8	8	16	16	0	33	244.78
Stethoscope Litman Type	30	pcs	286.53	10%	29	0	0	1	1	3	3	0	6	43.28
Thermometer Electronic	30	pcs	140.11	10%	14	0	0	1	1	1	1	0	3	21.02
Stethoscope Baby Standard	5	pcs	98.82	10%	10	0	0	0	0	1	1	0	2	14.82
Diagnostic Set Newborn	5	pcs	715.78	10%	72	0	0	4	4	7	7	0	14	107.37
Lamp Examination Mobile	25	pcs	14,580.03	10%	1458	0	0	73	73	146	146	0	292	2,187.00

COMMUNICATIONS

SHAKA REVENUE AUTHORITY

Vamed Engineering GmbH Co KG

(CUSTOMS DIVISION)
P. O. BOX 8, ACCRA

Description of Goods	Qty	Unit	CIF (EURO)	I/D Rate	Imp Duty	Imp VAT	Imp NHIL	Eco Levy	EDAIF	Insp Fee	W/Tax	Proc Fee	S.I.L.	TOTAL (EURO)
Stand Iv 5 Castors Antistatic	20	pcs	4,280.10	10%	428	0	0	21	21	43	43	0	86	642.01
Stand Iv 5 Castors Standard	20	pcs	4,280.10	10%	428	0	0	21	21	43	43	0	86	642.01
Torch Battery Operated	20	pcs	581.34	10%	58	96	16	3	3	6	6	0	12	199.11
Trolley With Drawers	5	pcs	6,767.50	10%	676	1115	186	34	34	68	68	0	135	2,314.44
General Purpose Trolley	30	pcs	5,375.93	10%	538	887	148	27	27	54	54	0	108	1,841.26
Scales Baby W/ Measuring Rod	5	pcs	1,770.68	10%	177	292	49	9	9	18	18	0	35	606.42
Scales Patient W/ Height Measurement	10	pcs	2,676.32	10%	268	442	74	13	13	27	27	0	54	916.64
Pump Syringe	10	pcs	9,486.00	10%	949	0	0	47	47	95	95	0	190	1,422.90
Pump Volumetric Infusion	10	pcs	8,160.00	10%	816	0	0	41	41	82	82	0	163	1,224.00
Suction Unit Electric	5	pcs	7,156.92	10%	716	0	0	36	36	72	72	0	143	1,073.54
Wheelchair Folding Adult	15	pcs	2,278.00	10%	228	0	0	11	11	23	23	0	46	341.70
Trolley Cleaners Complete	15	pcs	6,000.62	10%	600	0	0	30	30	60	60	0	120	900.09
Forceps Cheatte With Jar	5	pcs	767.77	10%	77	0	0	4	4	8	8	0	15	115.17
Stethoscope Fetal Wood	15	pcs	72.32	10%	7	0	0	0	0	1	1	0	1	10.85
Minor Basic Set, General Surgery	5	pcs	2,020.71	10%	202	0	0	10	10	20	20	0	40	303.11
Gyn Obstetrics Set	5	pcs	6,469.56	10%	647	0	0	32	32	65	65	0	129	970.43
Gyn Delivery Pack	5	pcs	1,557.83	10%	156	0	0	8	8	16	16	0	31	233.67
Obstetrics Caesarian Section	5	pcs	721.13	10%	72	0	0	4	4	7	7	0	14	108.17
Emergency Obstetrics Laparotomy	5	pcs	9,956.77	10%	996	0	0	50	50	100	100	0	199	1,493.52
Obstetrics Surgical Instruments	5	pcs	5,081.61	10%	508	0	0	25	25	51	51	0	102	762.24
Ent Instrument Set	5	pcs	4,343.96	10%	434	0	0	22	22	43	43	0	87	651.58
Uterine Evacuation Set	5	pcs	1,831.06	10%	183	0	0	9	9	18	18	0	37	274.66
Basic Diagnostic Instrument Set	5	pcs	2,272.67	10%	227	0	0	11	11	23	23	0	45	340.90
Suture Set	5	pcs	364.25	10%	36	0	0	2	2	4	4	0	7	54.64
Dressing Set	5	pcs	1,876.32	10%	188	310	52	9	9	19	19	0	38	642.64
Counter Tablet Hand Held SIS	5	pcs	18.65	10%	2	3	1	0	0	0	0	0	0	6.39
Vaccine Transport Box	10	pcs	9,295.62	10%	930	1534	256	46	46	93	93	0	186	3,183.75

COMMISSIONER

BARA REVENUE AUTHORITY

(CUSTOMS DIVISION)
P. O. BOX 8, ACCRA

Vamed Engineering GmbH Co KG

Description of Goods	Qty	Unit	Clf (EURO)	I/D Rate	Imp Duty	Imp VAT	Imp NHIL	Eco Levy	EDAI	Insp Fee	W/Tax	Proc Fee	S.I.L.	TOTAL (EURO)
Measuring Jar	10	pcs	45.95	10%	5	8	1	0	0	0	0	0	1	15.74
Storage System Pharmacy	5	pcs	10,643.60	10%	1064	1756	293	53	53	106	106	0	213	3,646.43
Worktop	5	pcs	2,253.35	10%	225	372	62	11	11	23	23	0	45	771.77
Kitchenette	5	pcs	6,860.75	20%	1372	1235	206	34	34	69	69	0	137	3,156.94
Kitchen Worktop	10	pcs	12,095.28	20%	2419	2177	363	60	60	121	121	0	242	5,563.83
Chemistry Analyzer	5	pcs	50,147.99	10%	5015	8274	1379	251	251	501	501	0	1003	17,175.69
Bloodgas Analyzer	5	pcs	74,658.90	10%	7466	12319	2053	373	373	747	747	0	1493	26,670.67
Immuno Assay	5	pcs	91,800.00	10%	9180	15147	2525	459	459	918	918	0	1836	31,441.50
Centrifuge Bench Top Small	5	pcs	11,092.07	10%	1109	1830	305	55	55	111	111	0	222	3,799.03
Colorimeter	5	pcs	4,825.66	10%	483	796	133	24	24	48	48	0	97	1,652.79
Microscope: Bino X4, X10, X40 Oil Lenses	5	pcs	2,607.08	10%	261	430	72	13	13	26	26	0	52	892.93
Water Distiller Basic	5	pcs	8,477.43	10%	848	1399	233	42	42	85	85	0	170	2,903.52
Laboratory Accessories Set Of	5	pcs	9,693.17	10%	969	1599	267	48	48	97	97	0	194	3,319.91
Benching Laboratory	5	pcs	8,465.78	10%	847	1397	233	42	42	85	85	0	169	2,899.53
Detector Fetal Heart	10	pcs	4,429.36	10%	443	731	122	22	22	44	44	0	89	1,517.06
Monitor, Portable, Recovery	5	pcs	10,516.20	10%	1052	1735	289	53	53	105	105	0	210	3,601.80
Infant Incubator	5	pcs	61,864.09	10%	6186	10208	1701	309	309	619	619	0	1237	21,188.45
Cradle Measuring	5	pcs	33.99	10%	3	6	1	0	0	0	0	0	1	11.64
Resuscitation Unit	5	pcs	40,667.40	0%	0	0	0	203	203	407	407	407	813	2,440.04
Computer Pc	5	pcs	5,998.81	0%	0	900	150	30	30	60	60	60	120	1,409.72
Printer Laser	5	pcs	1,957.52	0%	0	294	49	10	10	20	20	20	39	460.02
Calculator Desk Model W/Print Out	5	pcs	132.18	10%	13	22	4	1	1	1	1	0	3	45.27
Tray Filing In/Out Plastic	60	pcs	415.42	10%	42	69	11	2	2	4	4	0	8	142.28
Stationery Set	30	pcs	1,359.56	20%	272	245	41	7	7	14	14	0	27	625.40
Board Charging Writing/Magnetic	5	pcs	1,047.99	10%	105	173	29	5	5	10	10	0	21	358.94
Board Notice	5	pcs	311.57	10%	31	51	9	2	2	3	3	0	6	106.71
Cash Box	10	pcs	352.48	10%	35	58	10	2	2	4	4	0	7	120.72

COMMISSIONER
SHARVA REVENUE AUTHORITY
(CUSTOMS DIVISION)
P. O. BOX 8, ACCRA

Description of Goods	Qty	Unit	CFI (EURO)	I/D Rate	Imp Duty	Imp VAT	Imp NHIL	Eco Levy	EDAI	Insp Fee	W/Tax	Proc Fee	S.I.L.	TOTAL (EURO)
Linen Set Of	5	pcs	27,984.55	10%	2796	4617	770	140	140	280	280	0	560	9,584.71
Tape Measure	20	pcs	172.21	10%	17	28	5	1	1	2	2	0	3	58.98
Commode (Toilet)	5	pcs	1,165.62	10%	117	192	32	6	6	12	12	0	23	399.23
Bedpan	30	pcs	1,370.89	10%	137	226	38	7	7	14	14	0	27	469.53
Urinal Male	15	pcs	90.92	10%	9	15	3	0	0	1	1	0	2	31.14
Refrigerator Standard	5	pcs	2,612.12	10%	261	431	72	13	13	26	26	0	52	894.65
Refrigerator Laboratory	5	pcs	6,294.26	10%	629	1039	173	31	31	63	63	0	126	2,155.79
Refrigerator Pharmacy	10	pcs	13,847.38	10%	1385	2285	381	69	69	138	138	0	277	4,742.73
Locker Two Section	20	pcs	4,758.46	10%	476	785	131	24	24	48	48	0	95	1,629.77
Shelf Unit S/S	30	pcs	11,556.27	10%	1156	1907	318	58	58	116	116	0	231	3,958.02
Stool Mobile Kick Type	5	pcs	242.33	10%	24	40	7	1	1	2	2	0	5	83.00
Shelf System Universal Basic Unit	75	pcs	12,745.88	10%	1275	2103	351	64	64	127	127	0	255	4,365.47
Shelf System Universal Additional Unit	35	pcs	4,934.70	10%	493	814	136	25	25	49	49	0	99	1,690.14
Bucket S/S Mobile	10	pcs	1,678.50	10%	168	277	46	8	8	17	17	0	34	574.88
Stand Bowl Single	10	pcs	1,092.42	10%	109	180	30	5	5	11	11	0	22	374.15
Diaternity Unit Bipolar	5	pcs	19,028.97	10%	1903	3140	523	95	95	190	190	0	381	6,517.42
Stool Doctor	5	pcs	1,059.32	20%	212	191	32	5	5	11	11	0	21	487.29
Stool Anaesthetist Mobile	5	pcs	609.96	20%	122	110	18	3	3	6	6	0	12	280.68
Table Mayo	5	pcs	2,407.56	20%	482	433	72	12	12	24	24	0	48	1,107.48
Trolley Instrument S/S	15	pcs	7,704.18	10%	770	1271	212	39	39	77	77	0	154	2,638.68
Lamp Operating	5	pcs	22,950.00	20%	4590	4131	689	115	115	230	230	0	459	10,557.00
Tourniquet Quick Release	25	pcs	176.24	10%	18	29	5	1	1	2	2	0	4	60.36
Suction Unit Obstetric	5	pcs	9,721.29	10%	972	1604	267	49	49	97	97	0	194	3,329.54
Table Operating Minor	5	pcs	40,258.11	10%	4026	6643	1107	201	201	403	403	0	805	13,788.40
Concealment Trolley	5	pcs	5,128.74	10%	513	846	141	26	26	51	51	0	103	1,756.59
Washer Extractor	10	pcs	8,705.85	10%	871	1436	239	44	44	87	87	0	174	2,981.75
X-Ray Mobile	5	pcs	218,535.00	10%	21854	36058	6010	1093	1093	2185	2185	0	4371	74,848.24

COMMISSIONER

SEAMA REVENUE AUTHORITY

(CUSTOMS DIVISION)

P. O. BOX 8, ACCRA

Vanted Engineering GmbH Co KG

Description of Goods	Qty	Unit	CIF (EURO)	I/D Rate	Imp Duty	Imp VAT	Imp NHIL	Eco Levy	EDAIF	Insp Fee	W/Tax	Proc Fee	S.I.L.	TOTAL (EURO)
Cr Unit + Printer	5	pcs	92,054.85	0%	0	13808	2301	460	460	921	921	921	1841	21,632.89
Ultrasound	5	pcs	100,205.50	10%	10021	16534	2756	501	501	1002	1002	0	2004	34,320.38
Ctg Machine	5	pcs	9,690.00	10%	969	1599	266	48	48	97	97	0	194	3,318.83
Lead Marker Set	5	pcs	932.48	10%	93	154	26	5	5	9	9	0	19	319.38
Illuminator X-Ray Single	20	pcs	5,392.13	10%	539	890	148	27	27	54	54	0	108	1,846.80
Apron Lead Single Slided 0.35 Mm	5	pcs	642.04	10%	64	106	18	3	3	6	6	0	13	219.90
Skirt Protection Set Of 4 0.5 Mm Pb	5	pcs	775.10	10%	78	128	21	4	4	8	8	0	16	265.47
Water Tap Laboratory	5	pcs	667.86	10%	67	110	18	3	3	7	7	0	13	226.75
Waste Incineration	5	pcs	19,816.56	10%	1982	3270	545	99	99	198	198	0	396	6,786.63
Generator For Waste Incineration	5	pcs	2,110.66	10%	211	348	58	11	11	21	21	0	42	722.87
Scrub Up Trough 1 Person	10	pcs	14,632.92	10%	1463	2414	402	73	73	146	146	0	293	5,011.78
Diagnostic Set Rechargeable W/Case	20	pcs	2,863.13	10%	286	472	79	14	14	29	29	0	57	980.62
TOTAL			6,497,636		772023	1018327	169721	32488	32488	64976	64976	2142	129953	2,287,095

CERTIFICATE

TOTAL TAX LIABILITY=2,287,095EUROS

Signature: 

Importer/Agent's Name & Designation: **ALBERT JACKLE**

BERNARD MANNING

This is to certify that the assessment given is true and correct.

08/10/2014

For Official Use

Assessment rechecked and found correct and complete.

08-10-2014


Date

COMMISSIONER

MANA REVENUE AUTHORITY

(CUSTOMS DIVISION)

P. O. BOX 8, ACCRA

Signature: 

Officer's Name & Rank: **GIDEON GLEY**
(ASST REV. OFFICER)

